





Sievi - Known for Safety and Comfort

Sievi is the largest footwear manufacturer in Northern Europe and has its roots in Northern Ostrobothnia in Finland. Sievi's products have been promoting occupational safety and well-being for more than 70 years.

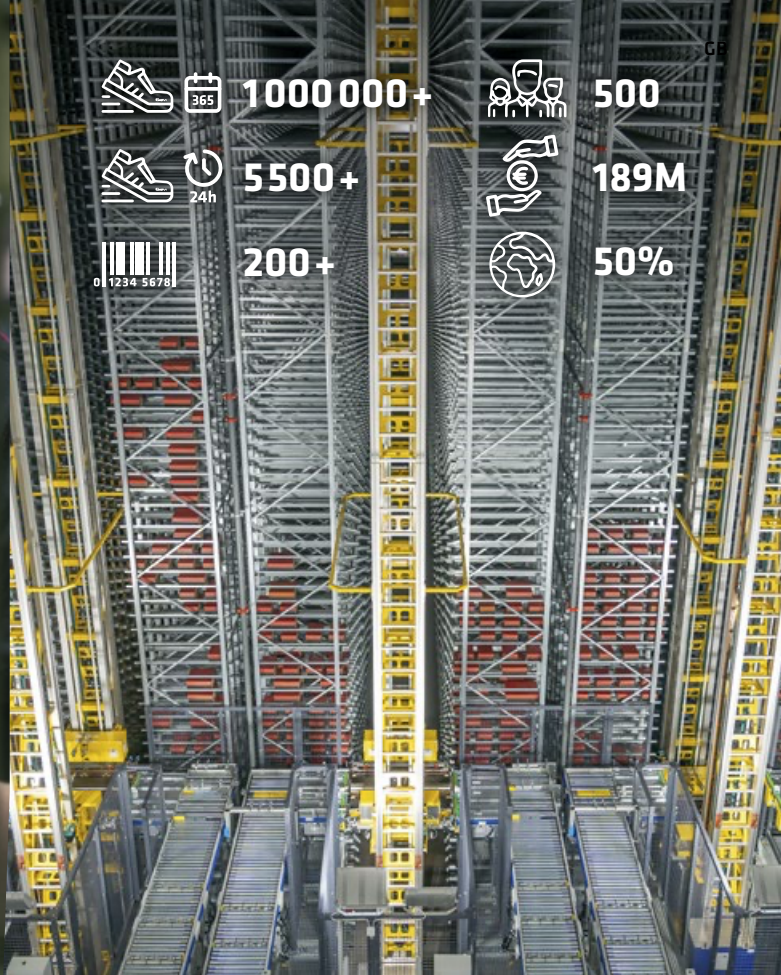
The expansion of approximately 5,000 m² in the automated warehouse and production facilities started in spring 2020, and the spaces will be fully operational by summer 2023. This EUR 15 million investment will guarantee and further enhance Sievi's security of supply, and it will also support Sievi's goal of developing innovative and sustainable solutions for its products. Once completed, the expansion will increase the company's warehouse capacity by 100,000 pairs of footwear to about 260,000 pairs, will create a new automatic pallet warehouse for about 2,000 pallets, and will expand the production area.

Sievi's approach to design is to focus on making things even better for those who wear our products in the

changing world. Our factories in Sievi and Oulainen produce more than 1.1 million pairs of footwear every year. These modern production facilities also house innovation operations and allow us to carry out various development projects, thus leading the footwear industry towards a more sustainable and responsible future. One of our most notable achievements in 2022 in terms of innovation was obtaining EU design protection for our Sievi TractionPro® friction sole.

We believe that determined work towards sustainability supports Sievi's long-term success, and we will publish our updated sustainability report in 2023. Future products will leave less of a footprint, and we will work harder to increase the proportion of sustainable materials in our products and to extend their lifecycles.

Here at Sievi, we create innovations for healthier and safer work environments. We want our customers to enjoy the most comfortable products on the market also in the future.



ABOUT SIEVI

- Founded in 1951
- Manufactures over one million pairs of shoes a year
- Production capacity more than 5,500 pairs a day
- More than 200 products
- Approx. 500 employees
- Group turnover approx. EUR 189 million
- Exports about 50% of its production
- Our fully automated warehouse of more than 150,000 pairs guarantees fast and punctual deliveries
- The company's production plants are located in Sievi and Oulainen

CERTIFICATES

ISO 9001 quality management system: products are always manufactured to a consistent production method from high quality, uniform materials. Quality can be checked at every stage of the production process. Sievi is the first shoe manufacturer in Europe to have been awarded this certification.

ISO 14001 certified environmental management system: Sievi is the first shoe manufacturer in Europe to implement a certified environmental system based on the ISO 14001 standard. This ensures that the environmental impact of the company's production and material procurement is minimised.

ISO 45001 certification: the company's occupational health and safety system meets the requirements of the ISO 45001 standard.

Read Sievi's sustainability report at www.sievi.com.



Sievi – Safety and Occupational Footwear Is the Basis of Health and Safety

Contents:

SAFETY FOOTWEAR

Sievi Runner	6
Sievi Cobra® collection	7
Sievi TractionPro® collection	8
Sievi AirRacer collection	10
SieviAir® XL collection	12
Cobra GORE-TEX range	13
GORE-TEX range	14
Sandals	16
Shoes	18
Sievi Roller shoes	22
Ankle boots	24
Sievi MGuard® Roller collection	27
Heat resistant range	28

Special-purpose footwear:

Welding	30
Asphalt and roof work	31
Chainsaw protection	31
Firefighting and rescue	31
Boots and combat boots	32
Boots for cold conditions	33
Integrated studs	36
WhiteLine range	38
Waterproof lightweight safety wellingtons	40

OCCUPATIONAL FOOTWEAR

Waterproof lightweight wellingtons	41
Lightweight occupational footwear	42
Sievi Fly range	44
Integrated studs	46
Boots for cold conditions	47

OTHER

SieviSCANNER	48
Insoles	48
Socks	51
Accessories	52
Laces	52
Size table and EN-standards	53
Footwear properties	54



1. BOA® Fit System
2. Light and anatomically shaped aluminium XL-toecap
3. PU-reinforced toe part
4. Sievi TractionPro® rubber friction sole
5. Flexible FlexEnergy® component
6. Cushioned tongue and topline
7. Penetration resistant midsole
8. Sievi Dual Comfort insole
9. Metashield® metatarsal guard
10. Sievi Memory foam ankle protection



PRODUCT SEARCH

Find the products based on safety class

Product code key

LAST STYLE SOLE UPPER MATERIAL

43-52156-113-08M

SAFETY FOOTWEAR

CLOGS			
Class	Style	Name	Page
SB	52933	Riff	16
SB	52933	Riff White	39

SANDALS			
Class	Style	Name	Page
S1	52162	Promo TR S1	8
S1	52227	Targa	16
S1	52236	Relax White XL	39
S1	52374	SieviAir R1	11
S1	52385	SieviAir R4 Roller	10
S1	52520	SieviAir Galaxy 1 XL	12
S1	52524	SieviAir Roller XL	12
S1P	52154	Sievi SpiderX 5+	17
S1P	52235	Relax XL+	17
S1P	52236	Relax XL	16
S1P	52305	Cobra 1 Roller+	7
S1P	52363	Racer Free TR Roller	9
S1P	52523	SieviAir Roller XL	12

SHOES			
Class	Style	Name	Page
S1	52120	Vent White Roller	38
S1	52124	Sievi Viper 1+	16
S1	52378	SieviAir R2 Roller	11
S2	52128	Alfa White	39
S2	52190	Rival	18
S2	52203	Alfa	18
S2	52204	Auto	18
S2	52238	Auto XL	18
S2	52342	Sievi Racer TR	9
S3	52102	Zone 2+	21
S3	52125	Viper Roller+	22
S3	52137	Sievi Viper 2+	19
S3	52156	Sievi Roller XL+	23
S3	52156	Sievi Roller+	23
S3	52171	Sievi Viper 3	19
S3	52173	Planar 1	20
S3	52175	Planar Red	20
S3	52184	Sweet Roller+	23
S3	52187	Sievi Viper 4	19
S3	52191	Viper 3 Roller	22
S3	52301	Cobra 2 Roller+	7
S3	52308	Runner Roller TR+	6
S3	52343	Racer TR Roller	9
S3	52354	Sweet RX Roller	22
S3	52357	Sievi Terrain	21
S3	52375	SieviAir R3 Roller	11
S3	52401	AL Hit 2 XL+	28
S3	52407	AL Hit 3 XL+	28
S3	52417	Spider Roller XL+	9
S3	52425	MGuard Roller XL+	27
S3	52643	Matador XL+	21
S3	52772	Sievi Elixir XL+	21
S3	52821	Sievi GT Roller+	14
S3	52841	Cobra GT Roller+	13

ANKLE BOOTS			
Class	Style	Name	Page
SB P	52863	Spike GT Roller	36
S1P	52371	SieviAir R5H Roller	11
S2P	52413	Asphalt Roller XL+	31
S3	52104	Zone 2 High+	26
S3	52122	ViperX High+	25
S3	52135	Planar 3	26
S3	52150	ViperX Roller H+	24
S3	52157	Sievi Roller High XL+	25
S3	52185	Roller High+	25
S3	52303	Cobra Roller High+	7
S3	52381	Racer Roller High	25
S3	52409	AL Hit 4 XL+	29
S3	52415	AL Hit Roller XL+	29
S3	52427	MGuard RollerH XL+	27
S3	52451	Hiker Roller XL+	35
S3	52645	Matador High XL+	26
S3	52774	Sievi Elixir High XL+	26
S3	52825	GT Roller High+	14
S3	52827	Cobra GT RollerH+	13
S3	52833	GT 2 XL+	15

ANKLE BOOTS AND BOOTS			
Class	Style	Name	Page
SB P	52279	Sievi Spike 3	36
S3	52039	Offshore XL+	32
S3	52085	AL Hit 9 XL+	37
S3	52291	Solid IN XL+	32
S3	52293	Solid Lady	33
S3	52293	Solid XL+	33
S3	52387	Rescue TR+	32
S3	52423	Alaska Thermo XL+	34
S3	52432	Alaska TRX XL+	34
S3	52433	Alaska Roller XL+	34
S3	52435	AL Hit 7 XL+	30
S3	52445	MGuard RollerW XL+	27
S3	52459	AL Hit 6 XL+	35
S3	52477	AL Hit Weld XL+	30
S3	52764	Star Polar XL+	33
S3	52782	Storm XL+	37
S3	52851	GT 7 XL+	15
S4	51010	Light Boot White	39
S4	51010	Light Boot Olive	40
S5	51009	Light Boot Olive	40
S5	51212	Light Boot Black	40
F1 P T	52481	AL GT Fire XL+	31
S3 / F1 P	52813	AL GT Timber XL	31

OCCUPATIONAL FOOTWEAR

CLOGS			
Class	Style	Name	Page
OB	12203	Monica 2	42
OB	12327	File Black	43
OB	12327	File White	43

SANDALS			
Class	Style	Name	Page
OB	12146	Art 2	43
OB	12156	Ion Black 2	43
OB	12157	Rom 2	43
OB	12225	Active	42
O1	12202	Ballerina 2	42

SHOES			
Class	Style	Name	Page
	12010	Mark	45
O1	12171	Street	45
O1	12173	Track	45
O2	12107	Racer TR Soft	45
O2	12190	Fly Blue Roller	44
O2	12192	Fly BW	44
O2	12196	Fly Black	44

ANKLE BOOTS			
Class	Style	Name	Page
OB	12276	Spike Soft	46
O1	12613	Frost	46
O2	12854	GT 57 XL	46

ANKLE BOOTS AND BOOTS			
Class	Style	Name	Page
O2	12018	Boot Winter XL	47
O2	12296	Soft Solid XL	47
O2	12402	Arktis TR XL+	47
O4	41012	Light Boot Black	41
O4	41212	Light Boot Laces	41
O5	41211	Light Boot Camo	41



MGuard RollerH XL+ S3 HRO

We reserve the right to make changes to our collection. Due to printing variations, colours in images may differ from the actual tone of some of the products. For more information, please visit www.sievi.com.



The sole's great grip and wear resistance are guaranteed by the new Sievi TractionPro® friction sole, which has a deep and sharp-edged tread profile and a sporty geometry that offer unprecedented user comfort and grip in all conditions. The sole structure has a modern design, flared at the base for added comfort and shock absorption, especially in the areas that support the foot.

CTC                                                                   

Product:	Runner Roller TR+ S3	Runner Roller TR+ S3
Product Code	43-52308-192-09M	43-52308-193-09M
Size	35-38	39-48
Standard	EN ISO 20345: S3 SRC HRO	EN ISO 20345: S3 SRC HRO
Toecap	Composite	Composite
Penetration resistant		
midsole	Composite	Composite
Sole material	Double Density PU/RU	Double Density PU/RU
Upper material	Textile/PU coated leather	Textile/PU coated leather
Last	M-43 Normal	M-43 Normal



TractionPro



Sievi Cobra – Superior Comfort, Grip and Support



FLEX ENERGY 3D-dry BOA

Product:	Cobra 1 Roller+ S1P
Product Code	43-52305-392-92M
Size	35-38
Standard	EN ISO 20345: S1 P SRC HRO
Toecap	Composite
Penetration resistant midsole	Steel
Sole material	Double Density PU/RU
Upper material	Microfiber
Last	M-43 Normal

Product:	Cobra 1 Roller+ S1P
Product Code	43-52305-393-92M
Size	39-48
Standard	EN ISO 20345: S1 P SRC HRO
Toecap	Composite
Penetration resistant midsole	Steel
Sole material	Double Density PU/RU
Upper material	Microfiber
Last	M-43 Normal



S1P

TractionPro

FlexEnergy
55% energy
return



FLEX ENERGY 3D-dry BOA

Product:	Cobra 2 Roller+ S3
Product Code	43-52301-392-92M
Size	35-38
Standard	EN ISO 20345: S3 SRC HRO
Toecap	Composite
Penetration resistant midsole	Steel
Sole material	Double Density PU/RU
Upper material	Microfiber
Last	M-43 Normal

Product:	Cobra 2 Roller+ S3
Product Code	43-52301-393-92M
Size	39-48
Standard	EN ISO 20345: S3 SRC HRO
Toecap	Composite
Penetration resistant midsole	Steel
Sole material	Double Density PU/RU
Upper material	Microfiber
Last	M-43 Normal



S3

TractionPro

FlexEnergy
55% energy
return



FLEX ENERGY 3D-dry BOA

Product:	Cobra Roller High+ S3
Product Code	43-52303-392-92M
Size	35-38
Standard	EN ISO 20345: S3 SRC HRO
Toecap	Composite
Penetration resistant midsole	Steel
Sole material	Double Density PU/RU
Upper material	Microfiber
Last	M-43 Normal

Product:	Cobra Roller High+ S3
Product Code	43-52303-393-92M
Size	39-48
Standard	EN ISO 20345: S3 SRC HRO
Toecap	Composite
Penetration resistant midsole	Steel
Sole material	Double Density PU/RU
Upper material	Microfiber
Last	M-43 Normal



S3

TractionPro

FlexEnergy
55% energy
return





The Sievi TractionPro® Sole Offers the Best Friction Properties on the Market for Varying Conditions

The Sievi TractionPro® is a sturdy friction sole that gives a stronger grip on slippery surfaces. Originally designed for winter use, Sievi TractionPro® is also available for year-round use.

The Sievi TractionPro® friction sole offers the best friction properties on the market, regardless of the conditions. The unique rubber friction sole together with the FlexStep® interlayer, developed by Sievi, ensure that the sole remains flexible in all conditions. The Sievi TractionPro® sole's structure and design and its sharp-edged tread profile are designed to maximise the friction and maintain the grip on different surfaces.



Product:

Product Code
Size
Standard
Toecap
Penetration resistant
midsole
Sole material
Upper material
Last

Sievi Promo TR S1

44-52162-132-01M
36-38
EN ISO 20345: S1 SRC HRO
Aluminium
No
Double Density PU/RU
PU coated leather
M-44 Normal

Sievi Promo TR S1

44-52162-133-01M
39-47
EN ISO 20345: S1 SRC HRO
Aluminium
No
Double Density PU/RU
PU coated leather
M-44 Normal



S1

TractionPro





FLEX ENERGY 3D-dry BOA

Product: **Racer Free TR Roller S1P**
 Product Code 44-52363-332-93M
 Size 34-38
 Standard EN ISO 20345: S1 P SRC HRO
 Toecap Aluminium
 Penetration resistant midsole Steel
 Sole material Double Density PU/RU
 Upper material Textile/PU coated leather
 Last M-44 Normal

Racer Free TR Roller S1P
 44-52363-333-93M
 39-48
 EN ISO 20345: S1 P SRC HRO
 Aluminium
 Steel
 Double Density PU/RU
 Textile/PU coated leather
 M-44 Normal



S1P

TractionPro

FlexEnergy
55% energy
return



FLEX ENERGY 3D-dry BOA

Product: **Sievi Racer TR S2**
 Product Code 44-52342-132-93M
 Size 35-38
 Standard EN ISO 20345: S2 SRC HRO
 Toecap Aluminium
 Penetration resistant midsole No
 Sole material Double Density PU/RU
 Upper material Textile/PU coated leather
 Last M-44 Normal

Sievi Racer TR S2
 44-52342-133-93M
 39-48
 EN ISO 20345: S2 SRC HRO
 Aluminium
 No
 Double Density PU/RU
 Textile/PU coated leather
 M-44 Normal



S2

TractionPro

FlexEnergy
55% energy
return



FLEX ENERGY 3D-dry BOA

Product: **Racer TR Roller S3**
 Product Code 44-52343-332-93M
 Size 34-38
 Standard EN ISO 20345: S3 SRC HRO
 Toecap Aluminium
 Penetration resistant midsole Steel
 Sole material Double Density PU/RU
 Upper material Textile/PU coated leather
 Last M-44 Normal

Racer TR Roller S3
 44-52343-333-93M
 39-48
 EN ISO 20345: S3 SRC HRO
 Aluminium
 Steel
 Double Density PU/RU
 Textile/PU coated leather
 M-44 Normal



S3

TractionPro

FlexEnergy
55% energy
return



FLEX ENERGY 3D-dry BOA

Product: **Spider Roller+ S3 HRO**
 Product Code 48-52417-372-25M
 Size 35-38
 Standard EN ISO 20345: S3 SRC HRO
 Toecap Aluminium
 Penetration resistant midsole Steel
 Sole material Double Density PU/RU
 Upper material Split leather
 Last M-48 Normal

Spider Roller XL+ S3 HRO
 48-52417-373-25M
 39-48
 EN ISO 20345: S3 SRC HRO
 Aluminium
 Steel
 Double Density PU/RU
 Split leather
 M-48 XL

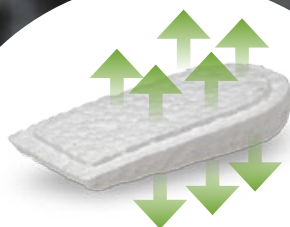


S3

TractionPro

FlexEnergy
55% energy
return





FLEX ENERGY

The component absorbs kinetic energy, with over 55% of the energy returned to the wearer.

Sievi AirRacer

Revolutionary User Comfort

The Sievi AirRacer product range combines the world's most advanced shock-absorbing heel with Sievi's patented revolutionary SieviAir® sole.

Sievi's FlexEnergy® flexible component provides maximum shock absorption, while the SieviAir® sole solution wicks away perspiration from the shoe through special ducts in the side of the sole. These ventilation channels allow your feet to breathe with every step.

Models with the SieviAir® sole solution are the SieviAir® collection with XL width and the Sievi AirRacer collection with normal width. Sievi AirRacer footwear features aluminium toe caps.



FLEX ENERGY 3D-dry SieviAir SOA

Product:

Product Code

Size

Standard

Toecap

Penetration resistant midsole

Sole material

Upper material

Last

SieviAir R4 Roller S1P

44-52385-382-92M

35-38

EN ISO 20345: S1 P SRC

Aluminium

Steel

Single Density PU

Microfiber

M-44 Normal

SieviAir R4 Roller S1P

44-52385-383-92M

39-48

EN ISO 20345: S1 P SRC

Aluminium

Steel

Single Density PU

Microfiber

M-44 Normal



S1P

FlexEnergy
55% energy
return





Product:	SieviAir R1 S1
Product Code	44-52374-182-92M
Size	34-38
Standard	EN ISO 20345: S1 SRC
Toecap	Aluminium
Penetration resistant midsole	No
Sole material	Single Density PU
Upper material	Microfiber
Last	M-44 Normal

Product:	SieviAir R1 S1
Product Code	44-52374-183-92M
Size	39-48
Standard	EN ISO 20345: S1 SRC
Toecap	Aluminium
Penetration resistant midsole	No
Sole material	Single Density PU
Upper material	Microfiber
Last	M-44 Normal



S1


FlexEnergy
55% energy
return


Product:	SieviAir R2 Roller S1
Product Code	44-52378-182-92M
Size	35-38
Standard	EN ISO 20345: S1 SRC
Toecap	Aluminium
Penetration resistant midsole	No
Sole material	Single Density PU
Upper material	Microfiber
Last	M-44 Normal

Product:	SieviAir R2 Roller S1
Product Code	44-52378-183-92M
Size	39-48
Standard	EN ISO 20345: S1 SRC
Toecap	Aluminium
Penetration resistant midsole	No
Sole material	Single Density PU
Upper material	Microfiber
Last	M-44 Normal



S1


FlexEnergy
55% energy
return


Product:	SieviAir R3 Roller S3
Product Code	44-52375-382-92M
Size	35-38
Standard	EN ISO 20345: S3 SRC
Toecap	Aluminium
Penetration resistant midsole	Steel
Sole material	Single Density PU
Upper material	Microfiber
Last	M-44 Normal

Product:	SieviAir R3 Roller S3
Product Code	44-52375-383-92M
Size	39-48
Standard	EN ISO 20345: S3 SRC
Toecap	Aluminium
Penetration resistant midsole	Steel
Sole material	Single Density PU
Upper material	Microfiber
Last	M-44 Normal



S3


FlexEnergy
55% energy
return


Product:	SieviAir R5H Roller S1P
Product Code	44-52371-382-92M
Size	35-38
Standard	EN ISO 20345: S1 P SRC
Toecap	Aluminium
Penetration resistant midsole	Steel
Sole material	Single Density PU
Upper material	Microfiber
Last	M-44 Normal

Product:	SieviAir R5H Roller S1P
Product Code	44-52371-383-92M
Size	39-48
Standard	EN ISO 20345: S1 P SRC
Toecap	Aluminium
Penetration resistant midsole	Steel
Sole material	Single Density PU
Upper material	Microfiber
Last	M-44 Normal



S1P


FlexEnergy
55% energy
return

SieviAir®

The Best Breathability for Your Feet



SieviAir® creates the best breathability for your shoes and helps to keep your feet dry and suitably cool during long working hours.

Safety shoes with the SieviAir® sole solution, developed and patented by Sievi, are the most breathable on the market. SieviAir® transfers the moisture generated by foot warmth through ventilation channels in the side of the sole.

The insole of the SieviAir® sole is also perforated. There are filters under the insole, which are connected to ventilation channels. With each step, the filter is slightly compressed before reforming to its original shape as the foot is lifted, and the shoe is ventilated to keep your feet dry and suitably cool.

SieviAir® footwear is available up to XL width and comes with composite toe caps.



Product:	SieviAir Galaxy 1 S1	SieviAir Galaxy 1 XL S1
Product Code	43-52520-182-92M	49-52520-183-92M
Size	36-38	39-47
Standard	EN ISO 20345: S1 SRC	EN ISO 20345: S1 SRC
Toecap	Composite	Composite
Penetration resistant midsole	No	No
Sole material	Single Density PU	Single Density PU
Upper material	PU coated leather/microfiber	PU coated leather/microfiber
Last	M-43 Normal	M-49 XL



Product:	SieviAir Roller S1	SieviAir Roller XL S1
Product Code	43-52524-182-92M	49-52524-183-92M
Size	36-38	39-47
Standard	EN ISO 20345: S1 SRC	EN ISO 20345: S1 SRC
Toecap	Composite	Composite
Penetration resistant midsole	No	No
Sole material	Single Density PU	Single Density PU
Upper material	Microfiber/Split leather	Microfiber/Split leather
Last	M-43 Normal	M-49 XL



Product:	SieviAir Roller S1P	SieviAir Roller XL S1P
Product Code	43-52523-382-92M	49-52523-383-92M
Size	36-38	39-47
Standard	EN ISO 20345: S1 P SRC	EN ISO 20345: S1 P SRC
Toecap	Composite	Composite
Penetration resistant midsole	Steel	Steel
Sole material	Single Density PU	Single Density PU
Upper material	Microfiber/Split leather	Microfiber/Split leather
Last	M-43 Normal	M-49 XL

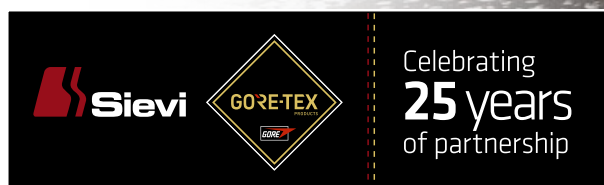


Cobra GORE-TEX

The Waterproof and Breathable Safety Shoe

A new, very impressive GORE-TEX safety shoe has been launched in Sievi's Cobra range, which retains the contemporary design and unique comfort of the Cobra. The new Cobra GT Roller+ S3 is a shoe that is quick to put on and comes with the BOA® Fit System and a flexible sock-like opening. Cobra GT shoes have a waterproof GORE-TEX layer that allows the foot to breathe while keeping moisture outside. The Sievi TractionPro® friction sole is the finishing touch that ensures that the shoes are ready for varying working conditions.

Sievi was among the first to manufacture waterproof safety shoes using GORE-TEX, and our cooperation has been ongoing for 25 years.



Product:

Product Code
Size
Standard
Toecap
Penetration resistant
midsole
Sole material
Upper material
Last

Cobra GT Roller+ S3

43-52841-392-92M
35-38
EN ISO 20345: S3 SRC WR HRO
Composite
Steel
Double Density PU/RU
Microfiber
M-43 Normal

Cobra GT Roller+ S3

43-52841-393-92M
39-48
EN ISO 20345: S3 SRC WR HRO
Composite
Steel
Double Density PU/RU
Microfiber
M-43 Normal



S3

TractionPro



Product:

Product Code
Size
Standard
Toecap
Penetration resistant
midsole
Sole material
Upper material
Last

Cobra GT RollerH+ S3

43-52827-392-92M
35-38
EN ISO 20345: S3 SRC WR HRO
Composite
Steel
Double Density PU/RU
Microfiber
M-43 Normal

Cobra GT RollerH+ S3

43-52827-393-92M
39-48
EN ISO 20345: S3 SRC WR HRO
Composite
Steel
Double Density PU/RU
Microfiber
M-43 Normal



S3

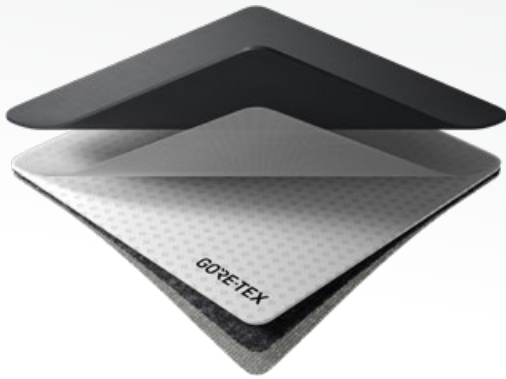
TractionPro





Sievi GORE-TEX

Safety for Changing Conditions



When you need safety shoes for changing conditions and outdoor work, Sievi GORE-TEX is your perfect choice.

GORE-TEX is a waterproof and breathable microporous membrane laminated directly onto the lining of the footwear. It offers the best breathability, water resistance and user comfort on the market, keeping your feet dry even in demanding jobs.

It is the only membrane structure on the market to be systematically tested for its functionality and comfort. You can choose the right footwear for your working conditions from the comprehensive Sievi GORE-TEX collection.

Sievi GORE-TEX footwear is equipped with steel penetration resistant midsole.

Product:

Product Code	43-52833-312-82M
Size	35-38
Standard	EN ISO 20345: S3 SRC WR
Toecap	Composite
Penetration resistant midsole	Steel
Sole material	Double Density PU/TPU
Upper material	Nubuck/Textile
Last	M-43 Normal



GT 2+ S3

Product Code	43-52833-312-82M
Size	35-38
Standard	EN ISO 20345: S3 SRC WR
Toecap	Composite

Penetration resistant midsole	Steel
Sole material	Double Density PU/TPU
Upper material	Nubuck/Textile
Last	M-43 Normal



GT 2 XL+ S3

Product Code	49-52833-353-82M
Size	39-47
Standard	EN ISO 20345: S3 SRC WR
Toecap	Composite

Penetration resistant midsole	Steel
Sole material	Single Density PU
Upper material	Nubuck/Textile
Last	M-49 XL



Product:

Product Code	45-52851-342-71M
Size	36-38
Standard	EN ISO 20345: S3 SRC
Toecap	Steel
Penetration resistant midsole	Steel
Sole material	Single Density PU
Upper material	Full grain leather
Last	M-45 Normal



GT 7 S3

Product Code	45-52851-342-71M
Size	36-38
Standard	EN ISO 20345: S3 SRC
Toecap	Steel

Penetration resistant midsole	Steel
Sole material	Single Density PU
Upper material	Full grain leather
Last	M-45 Normal



GT 7 XL+ S3

Product Code	49-52851-353-71M
Size	39-47
Standard	EN ISO 20345: S3 SRC
Toecap	Composite

Penetration resistant midsole	Steel
Sole material	Single Density PU
Upper material	Full grain leather
Last	M-49 XL




Product:

Product Code	Riff SBAE 50-52933-502-0PM
Size	35-38
Standard	EN ISO 20345: SB SRC A E FO
Toecap	Steel
Penetration resistant midsole	No
Sole material	Single Density PU
Upper material	PU coated leather
Last	M-50 Normal

Riff SBAE

Product Code	50-52933-503-0PM
Size	39-48
Standard	EN ISO 20345: SB SRC A E FO
Toecap	Steel
Penetration resistant midsole	No
Sole material	Single Density PU
Upper material	PU coated leather
Last	M-50 Normal



SB


Product:

Product Code	Targa S1 44-52227-142-0PM
Size	35-38
Standard	EN ISO 20345: S1 SRC
Toecap	Aluminium
Penetration resistant midsole	No
Sole material	Single Density PU
Upper material	PU coated leather
Last	M-44 Normal

Targa S1

Product Code	44-52227-143-0PM
Size	39-47
Standard	EN ISO 20345: S1 SRC
Toecap	Aluminium
Penetration resistant midsole	No
Sole material	Single Density PU
Upper material	PU coated leather
Last	M-44 Normal



S1


Product:

Product Code	Relax S1 45-52236-142-0PM
Size	35-39
Standard	EN ISO 20345: S1 SRC
Toecap	Steel
Penetration resistant midsole	No
Sole material	Single Density PU
Upper material	PU coated leather
Last	M-45 Normal

Relax XL S1

Product Code	47-52236-103-0PM
Size	40-47
Standard	EN ISO 20345: S1 SRC
Toecap	Steel
Penetration resistant midsole	No
Sole material	Single Density PU
Upper material	PU coated leather
Last	M-47 XL



S1


Product:

Product Code	Sievi Viper 1+ S1 43-52124-112-25M
Size	35-38
Standard	EN ISO 20345: S1 SRC
Toecap	Composite
Penetration resistant midsole	No
Sole material	Double Density PU/TPU
Upper material	Split leather
Last	M-43 Normal

Sievi Viper 1+ S1

Product Code	43-52124-113-25M
Size	39-47
Standard	EN ISO 20345: S1 SRC
Toecap	Composite
Penetration resistant midsole	No
Sole material	Double Density PU/TPU
Upper material	Split leather
Last	M-43 Normal



S1



Safety Sandals

Keep Your Feet Cool Even on Long Working Hours

Safety is just as important in demanding indoor work as it is outdoors. Sievi's safety sandal collection is designed for smooth indoor work. There is a suitable Sievi safety sandal for everyone.

Sandals for dry conditions are safe, comfortable and quick to put on. They have efficient ventilation, which means that your feet stay suitably cool even during long working hours.

The breathable SpiderX 5+ safety shoe is in protection class S1P and comes with the SieviSoleX® composite textile penetration-resistant midsole, which protects against even smaller nails than before.

Standard
EN ISO 22568-4
method X

SieviSole-X



Product:	Sievi SpiderX 5+ S1P
Product Code	43-52154-112-09M
Size	35-38
Standard	EN ISO 20345: S1 P SRC
Toecap	Composite
Penetration resistant midsole	Composite X
Sole material	Double Density PU/TPU
Upper material	PU coated leather/microfiber
Last	M-43 Normal

Product:	Sievi SpiderX 5+ S1P
Product Code	43-52154-113-09M
Size	39-47
Standard	EN ISO 20345: S1 P SRC
Toecap	Composite
Penetration resistant midsole	Composite X
Sole material	Double Density PU/TPU
Upper material	PU coated leather/microfiber
Last	M-43 Normal



S1P

SieviSole-X



Product:	Relax S1P
Product Code	45-52235-342-0PM
Size	36-38
Standard	EN ISO 20345: S1 P SRC
Toecap	Steel
Penetration resistant midsole	Steel
Sole material	Single Density PU
Upper material	PU coated leather
Last	M-45 Normal

Product:	Relax XL S1P
Product Code	47-52235-304-0PM
Size	48-50
Standard	EN ISO 20345: S1 P SRC
Toecap	Steel
Penetration resistant midsole	Steel
Sole material	Single Density PU
Upper material	PU coated leather
Last	M-47 XL



S1P



Product:	Relax XL+ S1P
Product Code	47-52235-353-0PM
Size	39-47
Standard	EN ISO 20345: S1 P SRC
Toecap	Steel
Penetration resistant midsole	Steel
Sole material	Single Density PU
Upper material	PU coated leather
Last	M-47 XL



S1P





Product: Alfa S2
 Product Code 44-52203-142-0PM
 Size 35-38
 Standard EN ISO 20345: S2 SRC
 Toecap Aluminium
 Penetration resistant midsole No
 Sole material Single Density PU
 Upper material PU coated leather
 Last M-44 Normal

Alfa S2
 44-52203-143-0PM
 39-47
 EN ISO 20345: S2 SRC
 Aluminium
 No
 Single Density PU
 PU coated leather
 M-44 Normal



S2



Product: Auto S2
 Product Code 44-52204-142-0PM
 Size 35-38
 Standard EN ISO 20345: S2 SRC
 Toecap Aluminium
 Penetration resistant midsole No
 Sole material Single Density PU
 Upper material PU coated leather
 Last M-44 Normal

Auto S2
 44-52204-143-0PM
 39-47
 EN ISO 20345: S2 SRC
 Aluminium
 No
 Single Density PU
 PU coated leather
 M-44 Normal



S2



Product: Auto XL S2
 Product Code 47-52238-103-0PM
 Size 39-48
 Standard EN ISO 20345: S2 SRC
 Toecap Steel
 Penetration resistant midsole No
 Sole material Single Density PU
 Upper material PU coated leather
 Last M-47 XL

Auto XL S2
 47-52238-103-0PM
 39-48
 EN ISO 20345: S2 SRC
 Steel
 No
 Single Density PU
 PU coated leather
 M-47 XL



S2



Product: Rival S2
 Product Code 44-52190-142-25M
 Size 36-38
 Standard EN ISO 20345: S2 SRC
 Toecap Aluminium
 Penetration resistant midsole No
 Sole material Single Density PU
 Upper material Split leather/PU coated leather
 Last M-44 Normal

Rival S2
 44-52190-143-25M
 39-47
 EN ISO 20345: S2 SRC
 Aluminium
 No
 Single Density PU
 Split leather/PU coated leather
 M-44 Normal



S2



Safe and Comfortable Safety Shoes in Every Style

Sievi's selection includes safety shoes in a wide range of styles and needs. Our wide range is designed to ensure that everyone who needs safety footwear will find a durable pair without compromising on style and safety.

All Sievi safety footwear has the FlexStep® sole developed by Sievi. Its microporous structure enables excellent shock absorption and flexibility properties. The structure of the flexible sole prevents stress and shocks to the feet and spine.

Many safety shoes in the Sievi range meet ESD standards and are therefore suitable for wearing in electrical environments.



Product:	Sievi Viper 4 S3
Product Code	44-52187-342-92M
Size	36-38
Standard	EN ISO 20345: S3 SRC
Toecap	Aluminium
Penetration resistant midsole	Steel
Sole material	Single Density PU
Upper material	Microfiber
Last	M-44 Normal

Sievi Viper 4 S3
44-52187-343-92M
39-47
EN ISO 20345: S3 SRC
Aluminium
Steel
Single Density PU
Microfiber
M-44 Normal



S3



Product:	Sievi Viper 3 S3
Product Code	44-52171-342-92M
Size	36-38
Standard	EN ISO 20345: S3 SRC
Toecap	Aluminium
Penetration resistant midsole	Steel
Sole material	Single Density PU
Upper material	Microfiber
Last	M-44 Normal

Sievi Viper 3 S3
44-52171-343-92M
39-47
EN ISO 20345: S3 SRC
Aluminium
Steel
Single Density PU
Microfiber
M-44 Normal



S3



Product:	Sievi Viper 2+ S3
Product Code	43-52137-312-25M
Size	35-38
Standard	EN ISO 20345: S3 SRC
Toecap	Composite
Penetration resistant midsole	Steel
Sole material	Double Density PU/TPU
Upper material	Split leather
Last	M-43 Normal

Sievi Viper 2+ S3
43-52137-313-25M
39-47
EN ISO 20345: S3 SRC
Composite
Steel
Double Density PU/TPU
Split leather
M-43 Normal



S3





Product:

Product Code

Size

Standard

Toecap

Penetration resistant
midsole

Sole material

Upper material

Last

Planar Red S3

42-52175-302-92P

35-38

EN ISO 20345: S3 SRC

Steel

Steel

Single Density PU

Microfiber

M-42 Normal

Planar Red S3

42-52175-303-92P

39-48

EN ISO 20345: S3 SRC

Steel

Steel

Single Density PU

Microfiber

M-42 Normal



S3



Product:

Product Code

Size

Standard

Toecap

Penetration resistant
midsole

Sole material

Upper material

Last

Planar 1 S3

42-52173-302-92M

35-38

EN ISO 20345: S3 SRC

Steel

Steel

Single Density PU

Split leather/Textile

M-42 Normal

Planar 1 S3

42-52173-303-92M

39-48

EN ISO 20345: S3 SRC

Steel

Steel

Single Density PU

Split leather/Textile

M-42 Normal



S3





Product:	Sievi Elixir XL+ S3
Product Code	49-52772-153-08M
Size	39-47
Standard	EN ISO 20345: S3 SRC
Toecap	Composite
Penetration resistant midsole	Composite
Sole material	Single Density PU
Upper material	PU coated leather/split leather
Last	M-49 XL



S3



Product:	Zone 2+ S3	Zone 2+ S3
Product Code	43-52102-112-92M	43-52102-113-92M
Size	36-38	39-47
Standard	EN ISO 20345: S3 SRC	EN ISO 20345: S3 SRC
Toecap	Composite	Composite
Penetration resistant midsole	Composite	Composite
Sole material	Double Density PU/TPU	Double Density PU/TPU
Upper material	PU coated leather/microfiber	PU coated leather/microfiber
Last	M-43 Normal	M-43 Normal



S3



Product:	Matador S3	Matador XL+ S3
Product Code	44-52643-342-0PM	49-52643-353-0PM
Size	36-38	39-47
Standard	EN ISO 20345: S3 SRC	EN ISO 20345: S3 SRC
Toecap	Aluminium	Composite
Penetration resistant midsole	Steel	Steel
Sole material	Single Density PU	Single Density PU
Upper material	PU coated leather	PU coated leather
Last	M-44 Normal	M-49 XL



S3



Product:	Sievi Terrain S3
Product Code	44-52357-343-33C
Size	39-47
Standard	EN ISO 20345: S3 SRC
Toecap	Aluminium
Penetration resistant midsole	Steel
Sole material	Single Density PU
Upper material	Nubuck
Last	M-44 Normal



S3


FlexEnergy
55% energy
return



Product:

Product Code
Size
Standard
Toecap
Penetration resistant
midsole
Sole material
Upper material
Last

Viper Roller+ S3

43-52125-312-25M
35-38
EN ISO 20345: S3 SRC
Composite
Steel
Double Density PU/TPU
Split leather
M-43 Normal

Viper Roller+ S3

43-52125-313-25M
39-47
EN ISO 20345: S3 SRC
Composite
Steel
Double Density PU/TPU
Split leather
M-43 Normal



S3



Product:

Product Code
Size
Standard
Toecap
Penetration resistant
midsole
Sole material
Upper material
Last

Viper 3 Roller S3

44-52191-342-25M
35-38
EN ISO 20345: S3 SRC
Aluminium
Steel
Single Density PU
Split leather
M-44 Normal

Viper 3 Roller S3

44-52191-343-25M
39-48
EN ISO 20345: S3 SRC
Aluminium
Steel
Single Density PU
Split leather
M-44 Normal



S3



Product:

Product Code
Size
Standard
Toecap
Penetration resistant
midsole
Sole material
Upper material
Last

Sweet RX Roller S3

44-52354-142-92M
35-43
EN ISO 20345: S3 SRC
Aluminium
Composite X
Single Density PU
Microfiber
M-44 Normal



S3



SieviSole-X

Sievi Roller

Quick to Put on, Easy to Adjust

The Sievi Roller range was designed for those who want their footwear to be quick and easy to adjust. Delivering fit solutions purpose-built for performance, the BOA® Fit System consists of three integral parts: a micro-adjustable dial, a super-strong lightweight lace and low friction lace guides. Each unique configuration is engineered for fast, effortless, precision fit.



BOA® Fit System:

- Push in to engage
- Turn for precision fit
- Pull up for fast release



Product:	Sievi Roller+ S3
Product Code	43-52156-113-08M
Size	39-47
Standard	EN ISO 20345: S3 SRC
Toecap	Composite
Penetration resistant midsole	Composite
Sole material	Double Density PU/TPU
Upper material	Microfiber/PU coated leather
Last	M-43 Normal



S3



Product:	Sievi Roller XL+ S3
Product Code	49-52156-153-08M
Size	39-47
Standard	EN ISO 20345: S3 SRC
Toecap	Composite
Penetration resistant midsole	Composite
Sole material	Single Density PU
Upper material	Microfiber/PU coated leather
Last	M-49 XL



S3



Product:	Sweet Roller+ S3
Product Code	43-52184-112-9PI
Size	35-42
Standard	EN ISO 20345: S3 SRC
Toecap	Composite
Penetration resistant midsole	Composite
Sole material	Double Density PU/TPU
Upper material	Microfiber/PU coated leather
Last	M-43 Normal



S3





Familiar Features in Many Forms

In addition to shoes, the Sievi Roller collection also includes ankle boots. The boot supports the ankle and the memory foam material also absorbs shocks to the ankle.

As with all other Sievi safety shoes, only durable materials are used in the Roller ankle boots and shoes. The materials are chosen for their suitability for different working conditions and for their durability. Water-repellent upper materials also keep your feet dry when you're working at the mercy of the elements.

SieviSole-X



Product:

Product Code
Size
Standard
Toecap
Penetration resistant
midsole
Sole material
Upper material
Last

ViperX Roller H+ S3

43-52150-112-25M
35-38
EN ISO 20345: S3 SRC
Composite
Composite X
Double Density PU/TPU
Split leather
M-43 Normal

ViperX Roller H+ S3

43-52150-113-25M
39-47
EN ISO 20345: S3 SRC
Composite
Composite X
Double Density PU/TPU
Split leather
M-43 Normal



S3




Product:

Product Code

Size

Standard

Toecap

Penetration resistant
midsole

Sole material

Upper material

Last

Roller High+ S3

43-52185-312-08M

35-38

EN ISO 20345: S3 SRC

Composite

Steel

Double Density PU/TPU

PU coated leather/
microfiber

M-43 Normal

Roller High+ S3

43-52185-313-08M

39-47

EN ISO 20345: S3 SRC

Composite

Steel

Double Density PU/TPU

PU coated leather/
microfiber

M-43 Normal



S3


Product:

Product Code

Size

Standard

Toecap

Penetration resistant
midsole

Sole material

Upper material

Last

Sievi Roller High XL+ S3

49-52157-353-08M

39-47

EN ISO 20345: S3 SRC

Composite

Steel

Single Density PU

PU coated leather/
microfiber

M-49 XL



S3


Product:

Product Code

Size

Standard

Toecap

Penetration resistant
midsole

Sole material

Upper material

Last

Racer Roller High S3

44-52381-342-92M

35-38

EN ISO 20345: S3 SRC

Aluminium

Steel

Single Density PU

Microfiber

M-44 Normal

Racer Roller High S3

44-52381-343-92M

39-48

EN ISO 20345: S3 SRC

Aluminium

Steel

Single Density PU

Microfiber

M-44 Normal



S3


FlexEnergy
55% energy
return

Product:

Product Code

Size

Standard

Toecap

Penetration resistant
midsole

Sole material

Upper material

Last

ViperX High+ S3

43-52122-112-25M

35-38

EN ISO 20345: S3 SRC

Composite

Composite X

Double Density PU/TPU

Split leather

M-43 Normal

ViperX High+ S3

43-52122-113-25M

39-47

EN ISO 20345: S3 SRC

Composite

Composite X

Double Density PU/TPU

Split leather

M-43 Normal



S3



SieviSole-X


Product:

Product Code	42-52135-302-93M
Size	35-38
Standard	EN ISO 20345: S3 SRC
Toecap	Steel
Penetration resistant midsole	Steel
Sole material	Single Density PU
Upper material	Textile/PU coated leather
Last	M-42 Normal

Planar 3 S3
Planar 3 S3

Product Code	42-52135-303-93M
Size	39-48
Standard	EN ISO 20345: S3 SRC
Toecap	Steel
Penetration resistant midsole	Steel
Sole material	Single Density PU
Upper material	Textile/PU coated leather
Last	M-42 Normal



S3


Product:

Product Code	49-52774-153-08M
Size	39-47
Standard	EN ISO 20345: S3 SRC
Toecap	Composite
Penetration resistant midsole	Composite
Sole material	Single Density PU
Upper material	PU coated leather/split leather
Last	M-49 XL

Sievi Elixir High XL+ S3


S3


Product:

Product Code	43-52104-112-92M
Size	36-38
Standard	EN ISO 20345: S3 SRC
Toecap	Composite
Penetration resistant midsole	Composite
Sole material	Double Density PU/TPU
Upper material	PU coated leather/microfiber
Last	M-43 Normal

Zone 2 High+ S3
Zone 2 High+ S3

Product Code	43-52104-113-92M
Size	39-47
Standard	EN ISO 20345: S3 SRC
Toecap	Composite
Penetration resistant midsole	Composite
Sole material	Double Density PU/TPU
Upper material	PU coated leather/microfiber
Last	M-43 Normal



S3


Product:

Product Code	44-52645-342-OPM
Size	36-38
Standard	EN ISO 20345: S3 SRC
Toecap	Aluminium
Penetration resistant midsole	Steel
Sole material	Single Density PU
Upper material	PU coated leather
Last	M-44 Normal

Matador High S3

Matador High XL+ S3

Product Code	49-52645-353-OPM
Size	39-47
Standard	EN ISO 20345: S3 SRC
Toecap	Composite
Penetration resistant midsole	Steel
Sole material	Single Density PU
Upper material	PU coated leather
Last	M-49 XL



S3



MGuard Roller

When You Need Additional Protection

The design of MGuard Roller shoes started with the idea of developing comfortable footwear that provides the user with additional protection in all conditions. The FlexEnergy® component in the heel, the BOA® Fit System lacing mechanism and the flexible Sievi TractionPro® rubber friction sole with great grip take the footwear to a new level of comfort. The MGuard Roller shoe has an integrated Metashield® metatarsal guard, which protects the

user from impacts on the instep. The MGuard RollerW XL+ S3 winter safety shoe also has a warm lining with PrimaLoft® thermal insulation made of 90% recycled materials. Waterproof, breathable and very light, PrimaLoft® thermal insulation keeps your feet dry in all conditions.



FLEX ENERGY 3D-dry BOA

Product:	MGuard Roller XL+ S3 HRO
Product Code	48-52425-373-25M
Size	39-48
Standard	EN ISO 20345: S3 SRC M HRO
Toecap	Aluminium
Penetration resistant midsole	Steel
Sole material	Double Density PU/RU
Upper material	Split leather
Last	M-48 XL



TractionPro

S3
M

FlexEnergy
55% energy
return



FLEX ENERGY 3D-dry BOA

Product:	MGuard RollerH XL+ S3 HRO
Product Code	48-52427-373-25M
Size	39-48
Standard	EN ISO 20345: S3 SRC M HRO
Toecap	Aluminium
Penetration resistant midsole	Steel
Sole material	Double Density PU/RU
Upper material	Split leather
Last	M-48 XL



TractionPro

S3
M

FlexEnergy
55% energy
return



FLEX ENERGY 3D-dry BOA PRIMALOFT

Product:	MGuard RollerW XL+ S3 HRO
Product Code	48-52445-373-02M
Size	39-48
Standard	EN ISO 20345: S3 SRC M HRO
Toecap	Aluminium
Penetration resistant midsole	Steel
Sole material	Double Density PU/RU
Upper material	PU coated leather/split leather
Last	M-48 XL



TractionPro

S3
M

FlexEnergy
55% energy
return





Product:

Product Code

Size

Standard

Toecap

Penetration resistant
midsole

Sole material

Upper material

Last

AL Hit 2+ S3 HRO

48-52401-392-0PM

35-38

EN ISO 20345: S3 SRC HRO

Aluminium

Steel

Double Density PU/RU

PU coated leather

M-48 Normal

AL Hit 2 XL+ S3 HRO

48-52401-393-0PM

39-48

EN ISO 20345: S3 SRC HRO

Aluminium

Steel

Double Density PU/RU

PU coated leather

M-48 XL



S3

Heat
resistant
stitching



Product:

Product Code

Size

Standard

Toecap

Penetration resistant
midsole

Sole material

Upper material

Last

AL Hit 3+ S3 HRO

48-52407-392-0PM

34-38

EN ISO 20345: S3 SRC HRO

Aluminium

Steel

Double Density PU/RU

PU coated leather

M-48 Normal

AL Hit 3 XL+ S3 HRO

48-52407-393-0PM

39-48

EN ISO 20345: S3 SRC HRO

Aluminium

Steel

Double Density PU/RU

PU coated leather

M-48 XL



S3



Product:

Product Code

Size

Standard

Toecap

Penetration resistant
midsole

Sole material

Upper material

Last

AL Hit 3 XL+ S3 HRO

48-52407-394-0PM

49-50

EN ISO 20345: S3 SRC HRO

Aluminium

Steel

Double Density PU/RU

PU coated leather

M-48 XL

Sievi AL Hit

Heavy-duty Footwear

Sievi AL Hit is a safety shoe collection developed for extremely hot working conditions.

The rubber sole of the AL Hit footwear withstands high temperatures of up to 300°C without losing its protective and wear properties. The AL Hit 2+ S3 HRO and AL Hit Roller+ S3 HRO shoes also have Kevlar® stitching to ensure that their seams withstand high temperatures.

Sizes: 34-50



Product:
AL Hit 4+ S3 HRO
 Product Code 48-52409-392-0PM
 Size 34-38
 Standard EN ISO 20345: S3 SRC HRO
 Toecap Aluminium
 Penetration resistant midsole Steel
 Sole material Double Density PU/RU
 Upper material PU coated leather
 Last M-48 Normal

AL Hit 4 XL+ S3 HRO
 Product Code 48-52409-393-0PM
 Size 39-48
 Standard EN ISO 20345: S3 SRC HRO
 Toecap Aluminium
 Penetration resistant midsole Steel
 Sole material Double Density PU/RU
 Upper material PU coated leather
 Last M-48 XL



S3



Product:
AL Hit 4 XL+ S3 HRO
 Product Code 48-52409-394-0PM
 Size 49-50
 Standard EN ISO 20345: S3 SRC HRO
 Toecap Aluminium
 Penetration resistant midsole Steel
 Sole material Double Density PU/RU
 Upper material PU coated leather
 Last M-48 XL

AL Hit 4 XL+ S3 HRO
 Product Code 48-52409-393-0PM
 Size 39-48
 Standard EN ISO 20345: S3 SRC HRO
 Toecap Aluminium
 Penetration resistant midsole Steel
 Sole material Double Density PU/RU
 Upper material PU coated leather
 Last M-48 XL



S3



Heat resistant stitching



Product:
AL Hit Roller+ S3 HRO
 Product Code 48-52415-392-0PM
 Size 35-38
 Standard EN ISO 20345: S3 SRC HRO
 Toecap Aluminium
 Penetration resistant midsole Steel
 Sole material Double Density PU/RU
 Upper material PU coated leather
 Last M-48 Normal

AL Hit Roller XL+ S3 HRO
 Product Code 48-52415-393-0PM
 Size 39-47
 Standard EN ISO 20345: S3 SRC HRO
 Toecap Aluminium
 Penetration resistant midsole Steel
 Sole material Double Density PU/RU
 Upper material PU coated leather
 Last M-48 XL



Safety Footwear for Special Fields



Product:

Product Code
Size
Standard

Toecap
Penetration resistant
midsole
Sole material
Upper material
Last

AL Hit Weld XL+ S3 HRO

48-52477-393-71M
39-48
EN ISO 20349-2:2017: S3 SRC
WG HI HRO FO
Aluminium

Steel
Double Density PU/RU
Full grain leather
M-48 XL

FlexEnergy
55% energy
return

Heat
resistant
stitching



S3
WG



Product:

Product Code
Size
Standard

Toecap
Penetration resistant
midsole
Sole material
Upper material
Last

AL Hit 7+ S3 HRO

48-52435-392-0PM
35-38
EN ISO 20345: S3 SRC HRO
Aluminium

Steel
Double Density PU/RU
PU coated leather
M-48 Normal

AL Hit 7 XL+ S3 HRO

48-52435-393-0PM
39-48
EN ISO 20345: S3 SRC HRO
Aluminium

Steel
Double Density PU/RU
PU coated leather
M-48 XL

Heat
resistant
stitching



S3





Product:	Asphalt Roller XL+ S2 P HRO
Product Code	47-52413-393-0PM
Size	39-47
Standard	EN ISO 20345: S2 P HRO SRC
Toecap	Steel
Penetration resistant midsole	Steel
Sole material	Double Density PU/RU
Upper material	PU coated leather
Last	M-47 XL



S2P

ASPHALT



Product:	AL GT Timber XL+ S3
Product Code	48-52813-373-71M
Size	39-48
Standard	EN ISO 15090:2012 F1 P A SRC T EN ISO 17249:2013 level 2/S3
Toecap	Aluminium
Penetration resistant midsole	Steel
Sole material	Double Density PU/RU
Upper material	Full grain leather
Last	M-48 XL


S3
F1
PA

Heat
resistant
stitching


Product:	AL GT Fire XL+ F1 P A
Product Code	48-52481-373-71M
Size	39-48
Standard	EN 15090 2012: F1 P A SRC T
Toecap	Aluminium
Penetration resistant midsole	Steel
Sole material	Double Density PU/RU
Upper material	Full grain leather
Last	M-48 XL


F1
PA
T

Heat
resistant
stitching




Product:	Star Polar XL+ S3
Product Code	49-52764-153-0PM
Size	39-47
Standard	EN ISO 20345: S3 SRC CI
Toecap	Composite
Penetration resistant midsole	Composite
Sole material	Single Density PU
Upper material	PU coated leather
Last	M-49 XL



S3



Product:	Solid Lady S3	Solid XL+ S3
Product Code	45-52293-342-0PM	47-52293-353-0PM
Size	35-38	39-47
Standard	EN ISO 20345: S3 SRC CI	EN ISO 20345: S3 SRC CI
Toecap	Steel	Steel
Penetration resistant midsole	Steel	Steel
Sole material	Single Density PU	Single Density PU
Upper material	PU coated leather	PU coated leather
Last	M-45 Normal	M-47 XL



S3




Product:

Product Code

Size

Standard

Toecap

Penetration resistant

midsole

Sole material

Upper material

Last

Alaska Roller+ S3

48-52433-372-02M

36-38

EN ISO 20345: S3 SRC HRO CI

Aluminium

Steel

Double Density PU/RU

PU coated leather

M-48 Normal

Alaska Roller XL+ S3

48-52433-373-02M

39-47

EN ISO 20345: S3 SRC HRO CI

Aluminium

Steel

Double Density PU/RU

PU coated leather

M-48 XL



TractionPro

S3


Product:

Product Code

Size

Standard

Toecap

Penetration resistant

midsole

Sole material

Upper material

Last

Alaska TRX+ S3

48-52432-172-02M

36-38

EN ISO 20345: S3 SRC HRO CI

Aluminium

Composite X

Double Density PU/RU

PU coated leather

M-48 Normal

Alaska TRX XL+ S3

48-52432-173-02M

39-48

EN ISO 20345: S3 SRC HRO CI

Aluminium

Composite X

Double Density PU/RU

PU coated leather

M-48 XL



TractionPro

SieviSole-X

S3



Alaska Thermo boot features a three-setting, integrated heating system. Additional batteries and chargers suitable for the product can also be ordered separately, see page 52.


Product:

Product Code

Size

Standard

Toecap

Penetration resistant

midsole

Sole material

Upper material

Last

Alaska Thermo XL+ S3 HRO

48-52423-373-08M

39-47

EN ISO 20345: S3 SRC HRO CI

Aluminium

Steel

Double Density PU/RU

PU coated leather

M-48 XL



TractionPro

S3





The Most Comfortable Safety Footwear for the Winter

Sievi's safety shoes with warm lining are designed to be worn in cold conditions. The warm lining, the Alu insoles that reflect heat and the Sievi TractionPro® friction sole guarantee a comfortable user experience in cold weather. A new feature in all winter safety shoes in the Alaska range is PrimaLoft® thermal insulation, made of 90% recycled materials, which

comes in addition to the warm lining. Waterproof, breathable and very light, PrimaLoft® thermal insulation keeps your feet warm in all conditions. The new PU leather upper material of Alaska Roller and TRX shoes performs even better in varying weather conditions.



Product:	Hiker Roller+ S3
Product Code	48-52451-372-08M
Size	36-38
Standard	EN ISO 20345: S3 SRC HRO CI
Toecap	Aluminium
Penetration resistant midsole	Steel
Sole material	Double Density PU/RU
Upper material	PU coated leather/microfiber
Last	M-48 Normal

Product:	Hiker Roller XL+ S3
Product Code	48-52451-373-08M
Size	39-47
Standard	EN ISO 20345: S3 SRC HRO CI
Toecap	Aluminium
Penetration resistant midsole	Steel
Sole material	Double Density PU/RU
Upper material	PU coated leather/microfiber
Last	M-48 XL



FlexEnergy
55% energy return

S3



TractionPro



Product:	AL Hit 6+ S3 HRO
Product Code	48-52459-372-0PM
Size	35-38
Standard	EN ISO 20345: S3 SRC HRO CI
Toecap	Aluminium
Penetration resistant midsole	Steel
Sole material	Double Density PU/RU
Upper material	PU coated leather
Last	M-48 Normal

Product:	AL Hit 6 XL+ S3 HRO
Product Code	48-52459-373-0PM
Size	39-48
Standard	EN ISO 20345: S3 SRC HRO CI
Toecap	Aluminium
Penetration resistant midsole	Steel
Sole material	Double Density PU/RU
Upper material	PU coated leather
Last	M-48 XL



S3



TractionPro

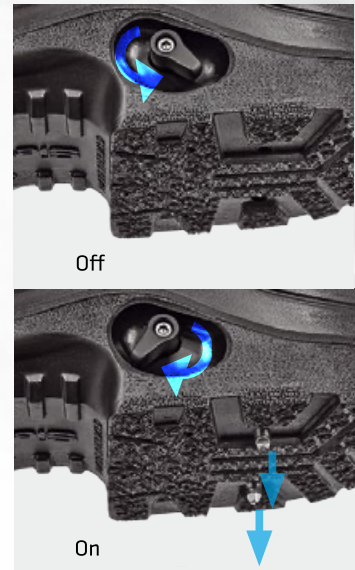
Sievi Spike®

Unprecedented Grip

Sievi Spike® footwear is specially designed for slippery winter conditions. A patented stud mechanism integrated into its sole structure enables you to easily twist the studs in and out without taking the shoes off.

Sievi Spike® footwear is light, flexible and easy to use and features unprecedented grip. The studs give the Spike shoes secure a grip on ice covered by snow or water, making them superior safety footwear for cold winter conditions in the north.

The Spike GT Roller footwear also features a waterproof and breathable GORE-TEX membrane and the BOA® Fit System.



Product:

Product Code
Size
Standard

Spike GT Roller

46-52863-342-08M
38
EN ISO 20345: SB SRC P A FO CI
WRU
Steel
Steel
Single Density PU
PU coated leather/nubuck
M-46 Normal

Spike GT Roller

46-52863-343-08M
39-47
EN ISO 20345: SB SRC P A FO CI
WRU
Steel
Steel
Single Density PU
PU coated leather/nubuck
M-46 Normal



SB
PA



Product:

Product Code
Size
Standard

Sievi Spike 3

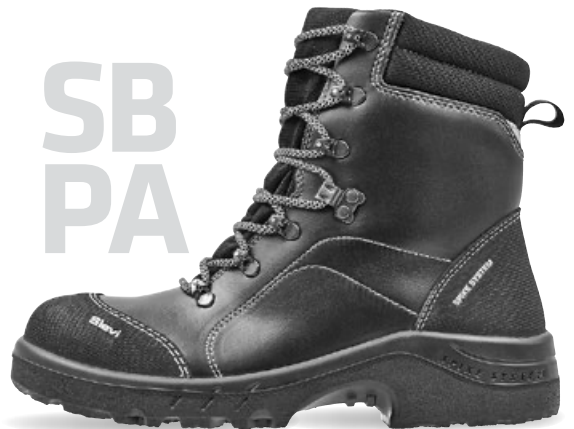
46-52279-342-0PM
38
EN ISO 20345: SB SRC P A FO CI
WRU
Steel
Steel
Single Density PU
PU coated leather
M-46 Normal

Sievi Spike 3

46-52279-343-0PM
39-47
EN ISO 20345: SB SRC P A FO CI
WRU
Steel
Steel
Single Density PU
PU coated leather
M-46 Normal



SB
PA





Product:	Storm XL+ S3
Product Code	49-52782-153-0PM
Size	39-47
Standard	EN ISO 20345: S3 SRC CI
Toecap	Composite
Penetration resistant midsole	Composite
Sole material	Single Density PU
Upper material	PU coated leather
Last	M-49 XL



S3



Product:	AL Hit 9+ S3 HRO
Product Code	48-52085-372-0PM
Size	35-38
Standard	EN ISO 20345: S3 SRC HRO CI
Toecap	Aluminium
Penetration resistant midsole	Steel
Sole material	Double Density PU/RU
Upper material	PU coated leather
Last	M-48 Normal

Product:	AL Hit 9 XL+ S3 HRO
Product Code	48-52085-373-0PM
Size	39-48
Standard	EN ISO 20345: S3 SRC HRO CI
Toecap	Aluminium

Penetration resistant midsole	Steel
Sole material	Double Density PU/RU
Upper material	PU coated leather
Last	M-48 XL



TractionPro

Heat resistant stitching

S3





Sievi WhiteLine

For Jobs That Require High Hygiene Level

The need for safety shoes is not limited to outdoors and extreme conditions but is also a must for jobs that require a high level of hygiene. The Sievi WhiteLine collection was designed with these special conditions in mind.

The WhiteLine shoes and clogs are made of microfibre, which can withstand repeated washing, making them ideal for working conditions that require a high level of hygiene.

WhiteLine footwear comes with either a steel or aluminium toecap to protect users from falling objects.



Product:	Vent White Roller S1
Product Code	44-52120-142-96W
Size	36-38
Standard	EN ISO 20345: S1 SRC
Toecap	Aluminium
Penetration resistant midsole	No
Sole material	Single Density PU
Upper material	Microfiber
Last	M-44 Normal

Product:	Vent White Roller S1
Product Code	44-52120-143-96W
Size	39-47
Standard	EN ISO 20345: S1 SRC
Toecap	Aluminium
Penetration resistant midsole	No
Sole material	Single Density PU
Upper material	Microfiber
Last	M-44 Normal



S1





Product:	Riff White SBAE
Product Code	50-52933-502-96W
Size	35-38
Standard	EN ISO 20345: SB SRC A E FO
Toecap	Steel
Penetration resistant midsole	No
Sole material	Single Density PU
Upper material	Microfiber
Last	M-50 Normal

Product:	Riff White SBAE
Product Code	50-52933-503-96W
Size	39-47
Standard	EN ISO 20345: SB SRC A E FO
Toecap	Steel
Penetration resistant midsole	No
Sole material	Single Density PU
Upper material	Microfiber
Last	M-50 Normal



SB



Product:	Alfa White S2
Product Code	42-52128-102-96W
Size	35-38
Standard	EN ISO 20345: S2 SRC
Toecap	Steel
Penetration resistant midsole	No
Sole material	Single Density PU
Upper material	Microfiber
Last	M-42 Normal

Product:	Alfa White S2
Product Code	42-52128-103-96W
Size	39-48
Standard	EN ISO 20345: S2 SRC
Toecap	Steel
Penetration resistant midsole	No
Sole material	Single Density PU
Upper material	Microfiber
Last	M-42 Normal



S2



Product:	Relax White S1
Product Code	45-52236-142-96W
Size	35-39
Standard	EN ISO 20345: S1 SRC
Toecap	Steel
Penetration resistant midsole	No
Sole material	Single Density PU
Upper material	Microfiber
Last	M-45 Normal

Product:	Relax White XL S1
Product Code	47-52236-103-96W
Size	40-47
Standard	EN ISO 20345: S1 SRC
Toecap	Steel
Penetration resistant midsole	No
Sole material	Single Density PU
Upper material	Microfiber
Last	M-47 XL



S1



Product:	Light Boot White S4
Product Code	95-51010-112-95H
Size	35-38
Standard	EN ISO 20345: S4 SRC
Toecap	Steel
Penetration resistant midsole	No
Sole material	Double Density PU/PU
Upper material	PU
Last	M-95 Normal

Product:	Light Boot White S4
Product Code	95-51010-113-95H
Size	39-47
Standard	EN ISO 20345: S4 SRC
Toecap	Steel
Penetration resistant midsole	No
Sole material	Double Density PU/PU
Upper material	PU
Last	M-95 Normal



S4





Lightweight Occupational Footwear for Indoor Uses

Your comfort zone starts with your feet. That's why Sievi's occupational footwear has been designed with both lightness and user comfort in mind.

Like all Sievi safety shoes, occupational footwear comes with the Sievi FlexStep® sole. FlexStep® helps to reduce stress on the back and the feet and absorbs shocks, making Sievi's professional footwear an excellent choice for those who work on their feet for long periods of time.

We have enhanced the comfort of our File Black professional footwear by adding cushioning under the heel to take some of the weight off the feet.



Product:	Monica 2
Product Code	20-12203-212-07M
Size	35-43
Standard	EN ISO 20347: OB SRC A E FO
Sole material	Single Density PU
Upper material	PU coated leather
Last	M-20 XL



OB



Product:	Ballerina 2
Product Code	20-12202-212-46M
Size	35-43
Standard	EN ISO 20347: 01 SRC FO
Sole material	Single Density PU
Upper material	Full grain leather
Last	M-20 XL



01



Product:	Active 1	Active 2
Product Code	35-12225-482-95M	37-12225-483-95M
Size	35-38	39-47
Standard	EN ISO 20347: OB SRC A E FO	EN ISO 20347: OB SRC A E FO
Sole material	Single Density PU	Single Density PU
Upper material	Microfiber	Microfiber
Last	M-35 Normal	M-37 Normal



OB





Product: Ion Black 2
Product Code 28-12156-282-38M
Size 36-42
Standard EN ISO 20347: OB SRC A E FO
Sole material Single Density PU
Upper material Nubuck
Last M-28 Normal



OB



Product: Art 2
Product Code 29-12146-293-38M
Size 39-47
Standard EN ISO 20347: OB SRC A E FO
Sole material Single Density PU
Upper material Nubuck
Last M-29 Normal



OB



Product: Rom 2
Product Code 29-12157-293-38M
Size 39-47
Standard EN ISO 20347: OB SRC A E FO
Sole material Single Density PU
Upper material Nubuck
Last M-29 Normal



OB



Product: File Black
Product Code 50-12327-502-0PM
Size 35-38
Standard EN ISO 20347: OB SRC A E FO
Sole material Single Density PU
Upper material PU coated leather
Last M-50 Normal

File Black
Product Code 50-12327-503-0PM
Size 39-48
Standard EN ISO 20347: OB SRC A E FO
Sole material Single Density PU
Upper material PU coated leather
Last M-50 Normal



OB



Product: File White
Product Code 50-12327-502-96W
Size 35-38
Standard EN ISO 20347: OB SRC A E FO
Sole material Single Density PU
Upper material Microfiber
Last M-50 Normal

File White
Product Code 50-12327-503-96W
Size 39-47
Standard EN ISO 20347: OB SRC A E FO
Sole material Single Density PU
Upper material Microfiber
Last M-50 Normal



OB





Sievi's Occupational Footwear For Work and Leisure

Sievi's occupational footwear range is designed for users who want high-quality footwear for both work and leisure. The shoes in the Sievi Fly collection are the only occupational footwear on the market with the FlexEnergy® component that meets the requirements of the EN ISO 20347

standard. It absorbs and returns kinetic energy to the wearer, which makes the Fly shoes light, sporty and comfortable to wear. The Fly Blue Roller model also has the BOA® Fit System.

The new Racer TR Soft is Sievi's first occupational footwear to feature the Sievi TractionPro® friction sole and FlexEnergy® component. We have also launched the new Track shoe and revamped the design of the classic Street shoe.



Product:

Product Code
Size
Standard
Sole material
Upper material
Last

Fly Blue Roller

35-**12190-482**-91H
35-38
EN ISO 20347: 02 SRC FO
Single Density PU
Textile
M-35 Normal

Fly Blue Roller

37-**12190-483**-91H
39-47
EN ISO 20347: 02 SRC FO
Single Density PU
Textile
M-37 Normal



02

FlexEnergy
55% energy
return



Product:

Product Code
Size
Standard
Sole material
Upper material
Last

Fly Black

35-**12196-482**-91M
35-38
EN ISO 20347: 02 SRC FO
Single Density PU
Textile
M-35 Normal

Fly Black

37-**12196-483**-91M
39-47
EN ISO 20347: 02 SRC FO
Single Density PU
Textile
M-37 Normal



02

FlexEnergy
55% energy
return



Product:

Product Code
Size
Standard
Sole material
Upper material
Last

Fly BW

35-**12192-482**-91M
35-38
EN ISO 20347: 02 SRC FO
Single Density PU
Textile
M-35 Normal

Fly BW

37-**12192-483**-91M
39-47
EN ISO 20347: 02 SRC FO
Single Density PU
Textile
M-37 Normal



02

FlexEnergy
55% energy
return





Product:	Mark
Product Code	36-12010-103-63M
Size	40-48
Standard	-
Sole material	Single Density PU
Upper material	Full grain leather
Last	M-36 Normal



Product:	Track
Product Code	38-12173-463-45M
Size	39-48
Standard	EN ISO 20347: 01 SRC FO
Sole material	Single Density PU
Upper material	Full grain leather
Last	M-38 Normal



01



Product:	Street
Product Code	38-12171-463-45M
Size	39-48
Standard	EN ISO 20347: 01 SRC FO
Sole material	Single Density PU
Upper material	Full grain leather
Last	M-38 Normal



01



Product:	Racer TR Soft	Racer TR Soft
Product Code	44-12107-132-25M	44-12107-133-25M
Size	35-38	39-48
Standard	EN ISO 20347: 01 SRC FO	EN ISO 20347: 01 SRC FO
Sole material	Double Density PU/RU	Double Density PU/RU
Upper material	Split leather	Split leather
Last	M-44 Normal	M-44 Normal



01

TractionPro

FlexEnergy
55% energy
return



Product: Frost
Product Code: 38-12613-523-45M
Size: 39-48
Standard: EN ISO 20347: 01 SRC
Sole material: Single Density PU/TR
Upper material: Full grain leather
Last: M-38 Normal



01



Product: Spike Soft
Product Code: 46-12276-142-33M
Size: 38
Standard: EN ISO 20347: 0B SRC A FO CI WRU
Sole material: Single Density PU
Upper material: Nubuck
Last: M-46 Normal

Spike Soft
Product Code: 46-12276-143-33M
Size: 39-47
Standard: EN ISO 20347: 0B SRC A FO CI WRU
Sole material: Single Density PU
Upper material: Nubuck
Last: M-46 Normal



0B



Product: GT 57
Product Code: 45-12854-142-08M
Size: 35-38
Standard: EN ISO 20347: 02 SRC FO
Sole material: Single Density PU
Upper material: PU coated leather/split leather
Last: M-45 Normal

Product: GT 57 XL
Product Code: 47-12854-103-08M
Size: 39-47
Standard: EN ISO 20347: 02 SRC FO
Sole material: Single Density PU
Upper material: PU coated leather/split leather
Last: M-47 XL

GT 57 XL
Product Code: 47-12854-104-08M
Size: 48-50
Standard: EN ISO 20347: 02 SRC FO
Sole material: Single Density PU
Upper material: PU coated leather/split leather
Last: M-47 XL



02





Product:	Soft Solid XL
Product Code	47-12296-103-0PM
Size	39-47
Standard	EN ISO 20347: 02 SRC FO CI
Sole material	Single Density PU
Upper material	PU coated leather
Last	M-47 XL



02



Product:	Boot Winter
Product Code	45-12018-142-0PM
Size	37-38
Standard	EN ISO 20347: 02 SRC FO CI
Sole material	Single Density PU
Upper material	PU coated leather
Last	M-45 Normal



02



Product:	Boot Winter XL
Product Code	47-12018-103-0PM
Size	39-48
Standard	EN ISO 20347: 02 SRC FO CI
Sole material	Single Density PU
Upper material	PU coated leather
Last	M-47 XL



Product:	Arktis TR+
Product Code	48-12402-172-09M
Size	35-38
Standard	EN ISO 20347: 02 SRC FO CI HRO
Sole material	Double Density PU/RU
Upper material	PU coated leather/microfiber
Last	M-48 Normal



TractionPro

02



Product:	Arktis TR XL+
Product Code	48-12402-173-09M
Size	39-47
Standard	EN ISO 20347: 02 SRC FO CI HRO
Sole material	Double Density PU/RU
Upper material	PU coated leather/microfiber
Last	M-48 XL

SieviSCANNER



Holistic Well-being for Feet by Sievi

The patented SieviSCANNER measures the length and the width of the foot as well as the anatomy of the arch using the most advanced laser-assisted scanning technology.

Based on the measurements taken, the SieviSCANNER system recommends suitable shoes and anatomical insoles:

- Sievi Dual Comfort Plus Neutral Arch
- Sievi Dual Comfort Plus High Arch
- Sievi Dual Comfort Plus Extra High Arch

The insoles are designed to be compatible with all Sievi safety and occupational footwear.

SieviSCANNER measuring services are available at larger Sievi dealers. To find your local measuring site, please visit: www.sievi.com

Sievi Comfort Insoles

The Comfort insole's polyamide surface transfers moisture from the foot to the lower layer of the insole. Activated carbon, silver thread and the Ultra-Fresh treatment all eliminate microbial growth, making this insole antibacterial and odourless. The Comfort insole is antistatic, complies with ESD standards, is breathable and is machine washable at 40°C.



Product: Sievi Comfort

Product Code	00-99520-002-00H	00-99520-003-00H
Size	35-38	39-48
Last	Normal	Normal

Product: Sievi Comfort XL

Product Code	00-99522-003-00H	00-99522-004-00H
Size	39-48	49-50
Last	XL	XL

Sievi Dual Comfort insoles

The Dual Comfort insole consists of three layers:

- soft and comfortable surface material
 - a breathable mid-layer
 - a light, shock absorbing EVA bottom layer, which maintains its shape
- Shock absorbing PORON® cushioning under the heel and ball of the foot diminishes external impacts and strain. The Dual Comfort insole is antistatic and complies with ESD standards. Hand wash only.

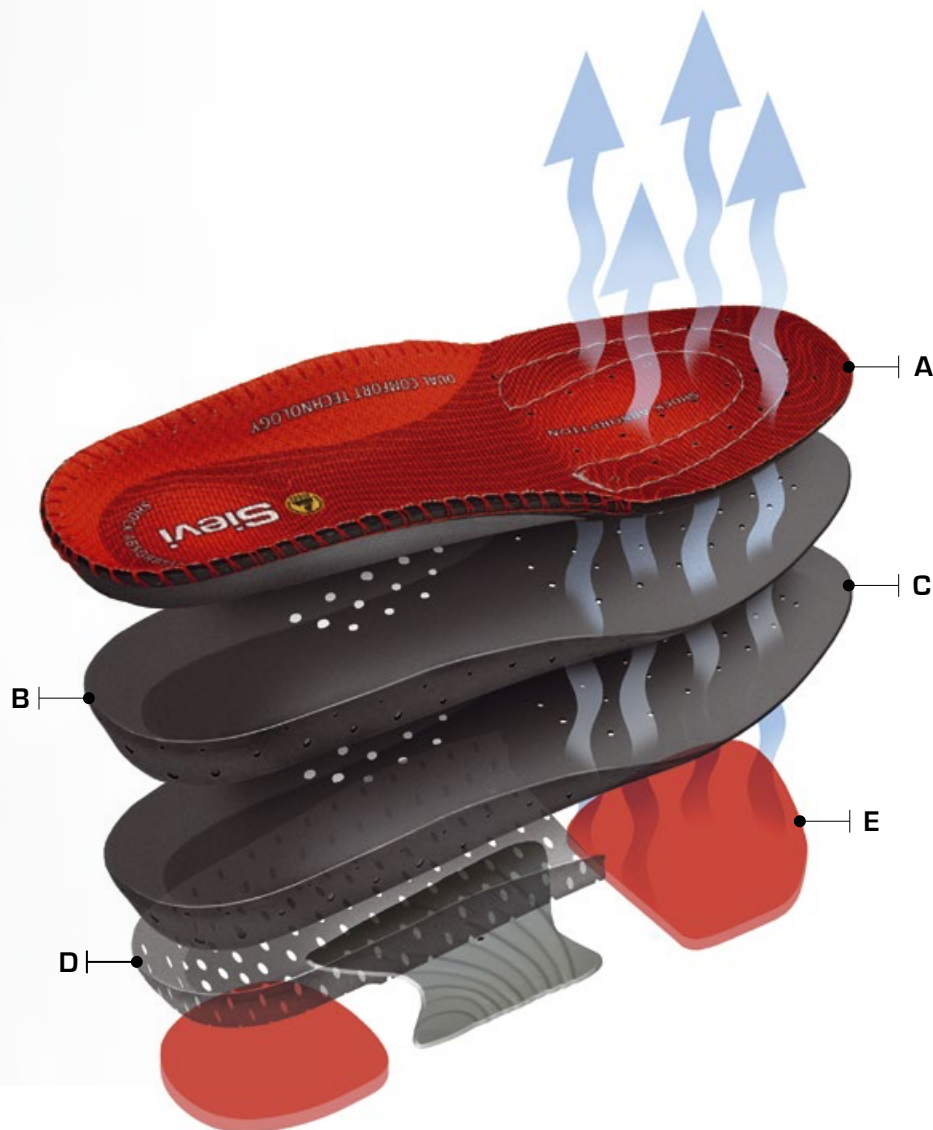


Product: Sievi Dual Comfort

Product Code	00-99525-002-00H	00-99525-003-00H
Size	34-38	39-48
Last	Normal	Normal

Product: Sievi Dual Comfort XL

Product Code	00-99527-003-00H	00-99527-004-00H
Size	39-48	49-50
Last	XL	XL



Sievi Dual Comfort Plus 5-layer structure

Five steps to the right support for your feet.

Here's how we ensure a perfect fit and support:

- A.** Antibacterial and quick-drying surface fabric (3% carbon fibre). The reinforcement stitching around the edge makes the insole durable and washable.
- B.** Breathable, quick-drying layer that wicks away moisture
- C.** Shock-absorbing EVA sole
- D.** Shape-retaining High Poly layer
- E.** PORON® shock-absorbing cushioning under the heel and ball of the foot. SieviBalance® arch support.

Sievi Dual Comfort Plus Insoles

SieviBalance® arch support. Dual Comfort Plus insoles come with three alternative heights for arch support:

- The Neutral Arch is intended for people with a low or neutral foot arch.
- The High Arch is intended for people with a high foot arch.
- The Extra High Arch is intended for people with a very high foot arch.

Hand wash only.



Product: Sievi Dual Comfort Plus: Neutral Arch

Product Code	00-99530-002-00H	00-99530-003-00H
Size	35-38	39-48
Last	Normal	Normal

Product: Sievi Dual Comfort Plus XL: Neutral Arch

Product Code	00-99532-003-00H
Size	39-48
Last	XL

Product: Sievi Dual Comfort Plus: High Arch

Product Code	00-99534-002-00H	00-99534-003-00H
Size	35-38	39-48
Last	Normal	Normal

Product: Sievi Dual Comfort Plus XL: High Arch

Product Code	00-99536-003-00H
Size	39-48
Last	XL

Product: Sievi Dual Comfort Plus: Extra High Arch

Product Code	00-99560-002-00H	00-99560-003-00H
Size	35-38	39-48
Last	Normal	Normal

Product: Sievi Dual Comfort Plus XL: Extra High Arch

Product Code	00-99562-003-00H
Size	39-48
Last	XL

Other Insoles



The Pressure Relief insole moulds itself to the shape of the wearer's foot, which distributes the weight more evenly while reducing strain. The insole is antistatic and complies with ESD standards. Machine washable at 40°C.

Product:	Pressure Relief
Product Code	00-99523-002-00H
Size	35-38
Last	Normal
Product Code	00-99523-003-00H
Size	39-48
Last	Normal



DryStep® is a sandal insole that is coated and ESD approved. Suitable for DryStep® sandals (see page 43). Machine washable at 40°C.



Product:	DryStep®
Product Code	28-99610-002-00H
Size	36-42
Last	Normal
Product Code	29-99610-003-00H
Size	39-47
Last	Normal



Warm fur insole made of 100% sheep fur.

Product:	Fur insole
Product Code	45-99510-002-000
Size	35-38
Last	Normal
Product Code	45-99510-003-000
Size	39-47
Last	Normal



The aluminium layer of the Winter Dual Comfort insole reflects heat efficiently. The EVA bottom layer in the insole and the PORON® shock-absorbing cushioning absorb impact and reduce strain. The insole is antistatic and complies with ESD standards. Hand wash only.

Product:	Winter Dual Comfort
Product Code	00-99519-002-00H
Size	35-38
Last	Normal
Product Code	00-99521-003-00H
Size	39-48
Last	XL
Product Code	00-99521-004-00H
Size	49-50
Last	XL

Sievi Socks

All Sievi socks meet ESD requirements.

When designing socks, we have paid special attention to their ergonomic design and ensuring that they stay put. The socks have no abrasive seams and they transfer moisture from the foot in a controlled manner. Durability is one of the features that we invest in when designing Sievi socks, and we ensure that they meet even the most demanding durability requirements. In addition to durability, user comfort has been enhanced by cushioning and several flexible areas of the heel and tip.

Sievi socks comply with ESD requirements and the requirements of the EN ISO 1149-3:2004 standard. Wearing Sievi ESD socks, insoles and footwear ensures that the body's static electricity is discharged in a controlled manner through the sole structure, which prevents damage to sensitive electronic devices.

The main conductive material in the Sievi sock range is Resistex® Carbon. Resistex® Carbon fibres effectively disperse electric charges accumulated from the environment or during physical exercise. The unique properties of Resistex® Carbon are obtained by uniting textile fibres with a continuous filament of conductive material based on active carbon.



Product: Cotton socks

Product Code 00-99360-003-00M
Size 36-39, 40-42, 43-46

Machine washable at 40°C, do not tumble dry.
66% cotton, 31% polyamide,
2% elastane, 1% carbon fibre.



Product: Ankle socks

Product Code 00-99372-003-00M
Size 36-39, 40-42, 43-46

The pack contains two pairs of socks.
Machine washable at 40°C, do not tumble dry.
42% Microlon® polyamide, 40% polyamide,
14% polypropylene, 2% elastane,
2% carbon fibre.



Product: All-season Merino socks

Product Code 00-99368-003-00M
Size 36-39, 40-42, 43-46, 47-50

Durable socks for year-round use.
Machine washable at 40°C, do not tumble dry.
48% polyamide, 34% merino wool,
14% polypropylene, 2% elastane,
2% carbon fibre.



Product: Drytex socks

Product Code 00-99370-003-00M
Size 36-39, 40-42, 43-46, 47-50

Socks that transfer moisture and heat from the skin.
Machine washable at 40°C, do not tumble dry.
50% polyester, 41% polyamide,
6% Cordura® polyamide, 2% elastane,
1% carbon fibre.



Product: Winter socks

Product Code 00-99364-003-00M
Size 36-39, 40-42, 43-46

Warm winter socks. Machine washable at 40°C, do not tumble dry. 43% polyester, 29% polyamide, 19% merino wool, 6% Cordura® polyamide, 2% elastane, 1% carbon fibre.



Product: Flame retardant socks

Product Code 00-99374-003-00M
Size 36-39, 40-42, 43-46

Flame retardant socks. Meet the requirements of EN ISO 14116: 2015 Index 2. Machine washable at 40°C, do not tumble dry. 49% Preox fibre, 27% polyamide, 21% Kevlar®, 2% elastane, 1% carbon fibre.



Product: Sievi felt socks

Product Code 00-99800-002-0HU
Size 35-38
Product Code 00-99800-003-0HU
Size 39-48

Dark grey, machine washable at 40°C. Felt.

Superior User Comfort by Sievi

Sievi's product range also includes footwear accessory products. Our products are made from high-quality materials to increase the life, functionality and comfort of your footwear.



Product: Shoe cream
Product Code 00-99400-000-000
125 ml

For treating seams and leather. Non-toxic, does not contain silicone. Colourless.



Product: Black shoe polish
Product Code 00-99410-000-000
75 ml

Also suitable for treating GORE-TEX products.



Product: Shoe protector spray
Product Code 00-99411-000-000
300 ml

Water-based shoe protector provides invisible protection against dirt and moisture without changing the feel or appearance of the footwear. Suitable for shoes made of suede, nubuck, leather, synthetic leather and textile.



Product:	Shoe laces	
Black	00-99080-000-00M	80 cm
	00-99090-000-00M	90 cm
	00-99110-000-00M	110 cm
	00-99160-000-00M	160 cm
Black/grey	00-99100-000-00H	100 cm
	00-99120-000-00H	120 cm
Spark resistant laces, black	00-99085-000-50M	85 cm
	00-99120-000-50M	120 cm

Shoe laces are supplied in packs of two.
Choose a length suitable for each model of shoe or boot.



Product: Therm-ic batteries and charger
Product Code 00-99911-000-000

Includes 4 batteries and charger for the Alaska Thermo boot heating system (sufficient for single pair of boots).
Uses standard voltage.



Product: Devisys Blue Ice slip protection
Product Code 00-99751-002-00M
Size 37-40
Product Code 00-99751-003-00M
Size 41-44, 45-48

Effectively reduces the risk of slipping.
The Devisys Blue Ice slip protection is suitable for all footwear and easy to fit.

Size Chart

PARIS	34	35	36	37	38	39	40	41	42	43	44	45	46	47	48	49	50
LONDON	2	2 ½	3	3 ½	4	5	6	7	8	9	10	11	12	13	14	15	16
MONDOPOINT	215	222	229	236	242	249	256	262	269	276	282	289	296	302	309	316	322

	Safety footwear EN ISO 20345:2011									Occupational footwear EN ISO 20347:2012						
PROTECTIVE FEATURE	SB	S1	S1P	S2	S2P	S3	S4	S5		OB	O1	O2	O3	O4	O5	
Sole grip	•	•	•	•	•	•	•	•		•	•	•	•	•	•	
Toecap (200 J/15000 N)	•	•	•	•	•	•	•	•								
Oil resistant sole FO		•	•	•	•	•	•	•								
Closed heel area		•	•	•	•	•	•	•			•	•	•	•	•	
Antistatic A (100 kΩ – 1000 MΩ)		•	•	•	•	•	•	•			•	•	•	•	•	
Energy absorption E (min. 20 J)		•	•	•	•	•	•	•			•	•	•	•	•	
Water repellent upper				•	•	•						•	•			
Patterned outsole						•		•					•			•
Penetration resistance P (1100 N)			•		•	•		•					•			•
Material rubber/PU							•	•						•		•
Additional feature: Oil resistant sole FO										•	•	•	•	•	•	

Additional features compliant with standards EN ISO 20345:2011 and EN ISO 20347:2012:

HRO The sole can withstand temperatures up to 300°C.	SRC The sole grip has been tested on both ceramic and steel surfaces according to the standard's requirements.	CI The cold insulation has been tested in accordance with the standard's requirements.	WG Footwear protects the wearer against the heat risks and molten metal splashes occurring in welding work in accordance with EN ISO 20349-2:2017.	M Footwear protects against impacts on the instep in accordance with the EN ISO 20345:2011 standard.
--	--	--	--	--

Certificates

ISO 9001

The quality management system ensures that the products are always manufactured according to a consistent production method from high quality, uniform materials. Quality can be checked at every stage of the production process.

ISO 14001

Sievi is the first shoe manufacturer in Europe to implement a certified environmental system based on the ISO 14001 standard. This ensures that the environmental impact of the company's production and material procurement is minimised.

ISO 45001

Sievi is ISO 45001 certified, which shows that the company's occupational health and safety system meets the requirements of the standard above.



Footwear marked with the European CE quality symbol fulfils the requirements of the EN ISO 20345:2011 or EN ISO 20347:2012 standards as outlined in the tables on page 53.



Inspecta Certificointi Oy

Leading Safety Technology and Superior User Comfort



FlexStep® – Grip and flexibility to work

The microporous FlexStep® sole material developed by Sievi retains its excellent shock absorption and flexibility in winter conditions. The structure of the flexible FlexStep® sole eliminates stress and shocks to the feet and spine. All Sievi safety footwear has the FlexStep® sole.



PrimaLoft® – The best thermal insulation in its category

The footwear has PrimaLoft® thermal insulation, which is made with 90% recycled materials. Waterproof, breathable and very light, PrimaLoft® thermal insulation keeps your feet dry in all conditions.



SieviAir® – Let your feet breathe

Developed and patented by Sievi, the SieviAir® sole solution wicks away the moisture generated by foot warmth through ventilation channels in the side of the sole. Under the perforated insole there is a filter, which is connected to the ventilation channels. With every step you take the filter is compressed, resuming its original shape when the foot is lifted. This movement produces a pumping action, improving the ventilation of the shoe.



BOA® Fit System

The BOA® Fit System contains three parts: a micro-adjustable dial, super-strong lightweight laces and low friction lace guides. The unique construction is designed to ensure a quick, effortless and precise fit.



GripStep® – Unique friction sole

Sievi's GripStep® is a unique sole structure that combines the friction properties of polyurethane and TR rubber on the tread to maximise the grip. The sole grips firmly on cold and slippery surfaces. Thanks to the dual structure, the sole is also flexible and shock absorbing.



GORE-TEX – Guaranteed waterproof

GORE-TEX is a unique waterproof lining that allows the foot to breathe while keeping moisture outside. It is the only membrane structure on the market to be systematically tested for its functionality and comfort.



DryStep® – Effective ventilation for your feet

The surface material of the DryStep® insole effectively transfers moisture away from the foot. DryStep®'s unique ventilation and pump action keeps your feet dry and comfortable.



Metashield® metatarsal guard

Sievi's Metashield® metatarsal guard is integrated into the shoe's structure and absorbs impacts on the instep by up to 90 percent. The guard, made of PORON XRD® material, is very flexible and its molecular structure, together with the shoe's breathable upper material, allows air to circulate and remove moisture from the shoe, making it very pleasant to wear. The Metashield® metatarsal guard offers significantly better protection than conventional safety shoes, without compromising comfort.



3D-Dry® – Always dry feet

The 3D-Dry® lining, developed by Sievi, transfers moisture away from the foot to the second layer of the lining material and further through the upper and away from the footwear.



Shock-absorbing heel - A light step day after day

The product meets the requirements of EN ISO 20345: 2011 and EN ISO 20347: 2012: the shock absorption capacity of the footwear is at least 20 J. The cushioning effect is guaranteed by the use of FlexStep® sole material in all Sievi footwear, see FlexStep® for more information.



SieviBalance® – Torsional stiffener

SieviBalance® torsional stiffener improves the rotational rigidity of the footwear and control of the foot, which reduces strain to the ankles.



FlexEnergy® – Flexibility at every step

The flexible FlexEnergy® component is integrated in the entire heel part of the shoe and provides maximum shock absorption of kinetic energy, with more than 55% of the energy returned to you. The component is made of BASF's TPU Infinergy® material, the world's first expanded thermoplastic polyurethane.



Spike stud mechanism – Secure grip in challenging conditions.

The stud mechanism integrated into the sole structure enables you to twist the studs in and out without taking the shoes off.



Thermo heating system – Keeps you going even in the cold

Footwear equipped with the integrated thermo heating system keeps your feet warm even in the most extreme conditions. The rechargeable heating system provides heat on a single charge for up to 22 hours (power range 1).



Sievi TractionPro® sole

Sievi TractionPro® is a sturdy friction sole that gives stronger grip on slippery surfaces. The unique sticky rubber sole, together with the FlexStep® interlayer, developed by Sievi, ensure that the sole remains flexible in all conditions. The TractionPro sole's structure and design, with its deep and sharp-edged tread profile, are designed to maximise friction and maintain grip on different surfaces.



Memory foam ankle protection

The ankle has viscoelastic memory foam that moulds itself to the wearer's foot, supporting the ankle and absorbing shocks.



Toecap, steel

The toecap protects toes from falling objects and compression. Meets the requirements of the EN ISO 20345:2011 standard: shock resistance is 200 J and resistance to compression 15000 N.



Toecap, composite

The toecap protects toes from falling objects and compression. Meets the requirements of the EN ISO 20345:2011 standard: shock resistance is 200 J and resistance to compression 15000 N. The composite material toecap is completely metal free and insulates well against heat and cold.



Toecap, aluminium

The toecap protects toes from falling objects and compression. Meets the requirements of the EN ISO 20345:2011 standard: shock resistance is 200 J and resistance to compression 15000 N. The aluminium toe cap is 50% lighter than conventional steel toecaps.



Penetration resistant midsole, steel

The steel midsole prevents sharp objects from penetrating the sole. Meets the requirements of the EN ISO 20345:2011 standard: resistance to nail penetration is 1100 N.



Penetration resistant midsole, composite textile

The penetration resistance fulfills the same requirements as the midsole made of steel. Steel, however, gives greater penetration resistance, which is why Sievi recommends a midsole made of steel or the SieviSole-X® composite textile for more demanding conditions (e.g. the construction industry).

SieviSole-X



Penetration resistant midsole X, composite textile

The product's penetration resistance meets the requirements of standard EN ISO 20345:2011. Designed to meet the requirements of the new stricter standard EN ISO 22568-4 (2021), which requires the penetration resistant midsole to be tested with a 3 mm conical nail instead of the 4.5 mm nail required by the older standard.



Sole material PU

The footwear sole is made of FlexStep® material. This single density microporous structured polyurethane sole offers very high slip-resistance and flexibility providing excellent shock absorption. Heat resistant up to 120°C.



Sole material PU/PU

The footwear sole is made of very durable double density polyurethane, and the mid-layer is made of shock-absorbing FlexStep® material. Heat resistant up to 120°C.



Sole material PU/TPU

The double density sole consists of polyurethane and elastic thermoplastic polyurethane. The outsole is wear resistant and the mid-layer is made of shock-absorbing FlexStep® material. Heat resistant up to 120°C.



Sole material PU/RU

The footwear sole consists of polyurethane and rubber. The PU/rubber friction sole features excellent grip and wear resistant properties. The mid-layer of the sole is made of shock-absorbing FlexStep® material. Heat resistant up to 300°C.



Resistant to oil and many chemicals.

The footwear sole is resistant to oil and many chemicals. The oil resistance meets the requirements of the EN ISO 20345:2011 standard.



Water repellence

The upper material used in the footwear is water repellent. Its water resistance meets the requirements of the EN ISO 20345:2011 standard.



Warm lining

The footwear is suitable for cold conditions. The insulating material is either lamb's wool, faux fur or PrimaLoft® thermal insulation.



Heat resistance

The footwear can be worn in hot environments. Sievi's nitrile rubber sole withstands temperatures up to 300°C.



Zipper

The footwear has a zipper for easy use.



Antistatic

Footwear designed with antistatic features discharges the body's static electricity up to tolerances of 100 kΩ - 1000 MΩ.



ESD

ESD footwear provides a safe and controlled method of discharging the body's static electricity through the sole. The tolerances for the resistance of Sievi's ESD footwear are stricter (100 kΩ-35 MΩ) than for ordinary antistatic footwear (IEC 61340-5-1). Wearing ESD footwear can help you avoid damage to sensitive electronic equipment.



Metal-free

The footwear is metal free and metal detectors do not react to it.



DUAL Comfort insole

The insole consists of three layers: a soft upper, a breathable mid-layer and a light, shock-absorbing EVA bottom layer. Shock-absorbing PORON® cushioning under the heel and ball of the foot diminishes external impacts and strain.



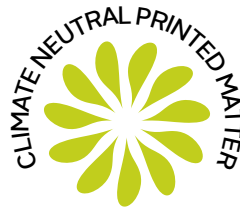
ALU insole

The Sievi ALU insole features a heat-insulating aluminium layer. The aluminium foil in the insole reflects the cold outward and the heat inward.

The Sievi catalogue has been printed sustainably.



Printed matter
4041-0619



ClimateCalc CC-000025/FI
PunaMusta Printing



www.sievi.com



Sievin Jalkine Oy

Korhosenkatu 24
FI-85310 SIEVI AS.
Tel. 08-488 11
Phone int. +358-8-488 11
E-mail: info@sievi.com



Sievi AB

Kristallen
Axel Johanssons gata 4-6
SE-754 50 UPPSALA
Tel. 018-200 220
E-mail: info.se@sievi.com



Sievi AS

Kjeller Vest 3
NO-2007 KJELLER
Tel. 952 48 000
E-mail: info.no@sievi.com



Sievi GmbH

Hochbergweg 11
DE-89518 HEIDENHEIM
Tel. +49 (0) 7321 - 355 828 -0
Fax +49 (0) 7321 - 355 828 -1
E-mail: info.de@sievi.com



Sievi UK

South
Tel. 07500-775 515
North
Tel. 07814-726 700
E-mail: info.uk@sievi.com



Sievi DK

Tel. 20 70 00 14
E-mail: info.dk@sievi.com



Sievi Netherlands

Tel. +31 683 272 272
E-mail: info.nl@sievi.com



Sievi Belgium

Tel. +32 14 73 50 75
E-mail: info.be@sievi.com



Sievi Baltic

Tel. +372 56 46 60 09
E-mail: info.ee@sievi.com